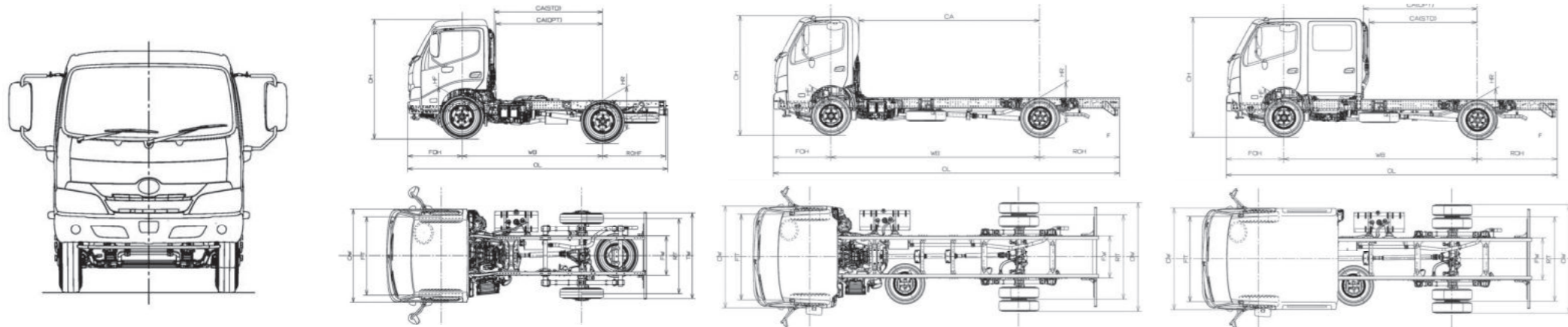


SPECIFICATION

MODEL	XZU600	XZU640	XZU600AT	XZC710	XZC730	XZC740	XZC710AT	XZC730AT	XZC720CREW	
FULL MODEL CODE	XZU600R - WKMLK3	XZU640R - WKMLK3	XZU600R - WKTLK3	XZC710R - WKFRL3	XZC730R - WKFRL3	XZC740R - WKFRL3	XZC710R - WKTRL3	XZC730R - WKTRL3	XZC720R - ZKFRL3	
GVW (Kg)	5,000	5,000	5,000	7,500	7,500	7,500	7,500	7,500	7,500	
DRIVE SYSTEM	CONFIGURATION	4 x 2	4 x 2	4 x 2	4 x 2	4 x 2	4 x 2	4 x 2	4 x 2	
	NO. OF WHEEL	4 Wheeler	4 Wheeler	4 Wheeler	6 Wheeler	6 Wheeler	6 Wheeler	6 Wheeler	6 Wheeler	
CAB STYLE	Standard Cab	Standard Cab	Standard Cab	Wide Cab	Wide Cab	Wide Cab	Wide Cab	Wide Cab	Crew Cab	
STANDARD WHEELBASE (mm)	2525	3075	2525	3500	4100	4400	3500	4100	3800	
ENGINE	MODEL	N04C - WG	N04C - WG	N04C - WG	N04C - WH	N04C - WH	N04C - WH	N04C - WH	N04C - WH	N04C - WH
	DISPLACEMENT (cc)	4,009	4,009	4,009	4,009	4,009	4,009	4,009	4,009	4,009
	EMISSION	Euro 3	Euro 3	Euro 3	Euro 3	Euro 3	Euro 3	Euro 3	Euro 3	Euro 3
	TYPE	Commonrail, Turbo Charged, Intercooled	Commonrail, Turbo Charged, Intercooled	Commonrail, Turbo Charged, Intercooled	Commonrail, Turbo Charged, Intercooled	Commonrail, Turbo Charged, Intercooled	Commonrail, Turbo Charged, Intercooled	Commonrail, Turbo Charged, Intercooled	Commonrail, Turbo Charged, Intercooled	Commonrail, Turbo Charged, Intercooled
	MAX OUTPUT (PS)	104 (141) / 2,500	104 (141) / 2,500	104 (141) / 2,500	115 (156) / 2,800	115 (156) / 2,800	115 (156) / 2,800	115 (156) / 2,800	115 (156) / 2,800	115 (156) / 2,800
MAX TORQUE (Nm)	402 (41) / 1,600	402 (41) / 1,600	402 (41) / 1,600	430 (44) / 1,400	430 (44) / 1,400	430 (44) / 1,400	430 (44) / 1,400	430 (44) / 1,400	430 (44) / 1,400	
TRANSMISSION / MODEL	Manual 5-Speed / RE50	Manual 5-Speed / RE50	Automatic 6-Speed / A860E	Manual 6-Speed / RE61	Manual 6-Speed / RE61	Manual 6-Speed / RE61	Automatic 6-Speed / A860E	Automatic 6-Speed / A860E	Manual 6-Speed / RE61	
SERVICE BRAKES	Vacuum Servo Hydraulic	Vacuum Servo Hydraulic	Vacuum Servo Hydraulic	Vacuum Servo Hydraulic	Vacuum Servo Hydraulic	Vacuum Servo Hydraulic	Vacuum Servo Hydraulic	Vacuum Servo Hydraulic	Vacuum Servo Hydraulic	
REAR AXLE MODEL	BD26A	BD26A	BD26A	SH12-1	SH12-1	SH12-1	SH12-1	SH12-1	SH12-1	



HINO 300

Series **PRO**

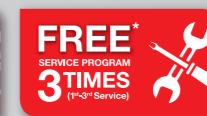
Strong, Spacious, Safety, Smart
Built for Ultimate Customer Success



HINO MOTORS SALES (MALAYSIA) SDN BHD (187863-U)

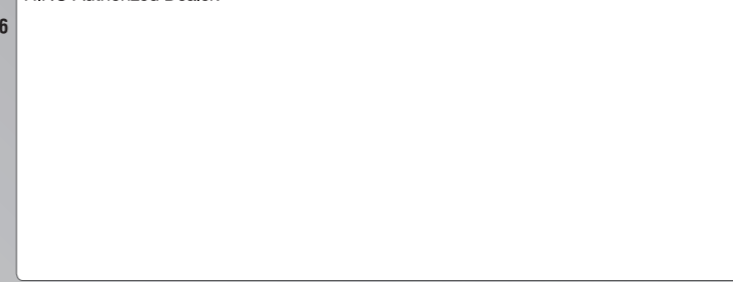
Selangor: Lot PT 24, Jalan 223, Section 51A, 46100 Petaling Jaya, Selangor Darul Ehsan, Malaysia. Tel: (603) 7957 5199 (12 lines) Fax: (603) 7954 3276
Sarawak: Lot 1076, Block 218, 4th Mile, Penrissen Road, 93250 Kuching, Sarawak, Malaysia. Tel: (082) 451 611 (5 lines) Fax: (082) 451 993
Sabah: Miles 4 1/2 Jalan Tuaran, Lot No. 353, Taman Cempaka, Likas, 88450 Kota Kinabalu, Sabah, Malaysia. Tel: (088) 393 663 Fax: (088) 424 223

www.hino.com.my



Terms and Conditions apply*

HINO Authorized Dealer:



STRONG

▼ HORSEPOWER & TORQUE

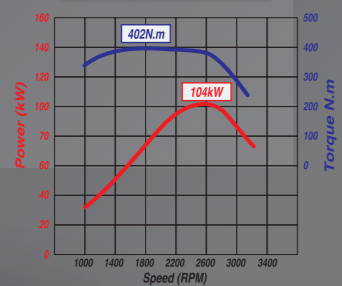
High horsepower and torque engines that offers powerful drive for all application and road condition



EURO 3 ENGINE



4 WHEELER



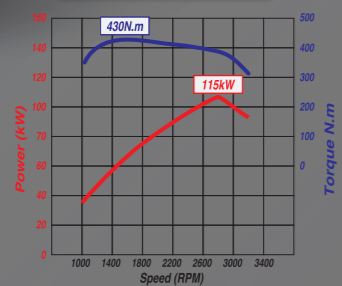
MAX OUTPUT (PS / rpm)

141 PS / 2,500 rpm

MAX TORQUE (Nm/rpm)

402 N.m / 1,600 rpm

6 WHEELER



MAX OUTPUT (PS / rpm)

156 PS / 2,800 rpm

MAX TORQUE (Nm/rpm)

430 N.m / 1,400 rpm

▼ TRANSMISSION

Comes with manual and fully automatic transmission that best-fit to customer business field



◀ 6-SPEED AUTOMATIC TRANSMISSION

This system is designed for smooth automatic gear changes and superior fuel efficiency that gives easier and comfortable driving



▶ MANUAL TRANSMISSION

4-wheeler comes with 5-speed manual transmission, 6-wheeler with 6-speed manual transmission for smooth acceleration from stationary position

SPACIOUS

4 WHEELER



▲ GVW UP TO 5 TONNE

The highest Gross Vehicle Weight (GVW) in its category up to 5 tonne (5,000 kg)

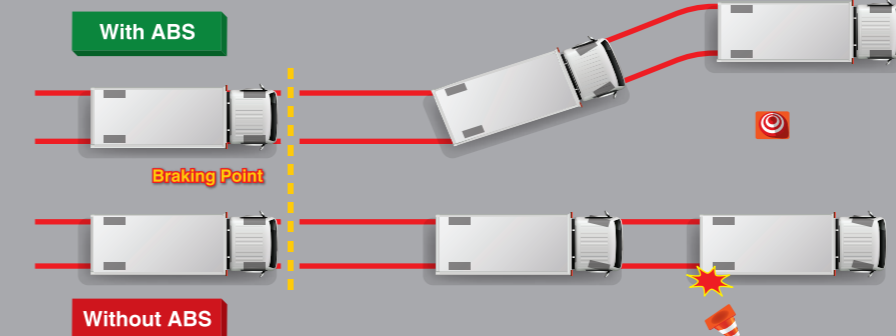
6 WHEELER



▲ BIGGEST BODY IN ITS CLASS

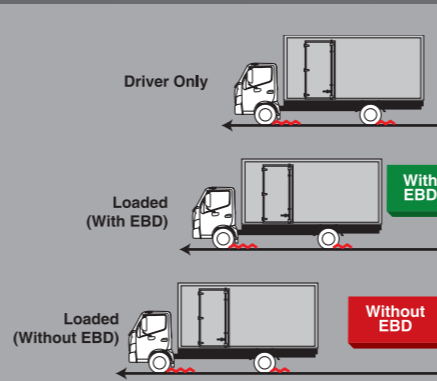
Widest rear tread in its category that is convenient to fit two wooden pallets side by side

SAFETY



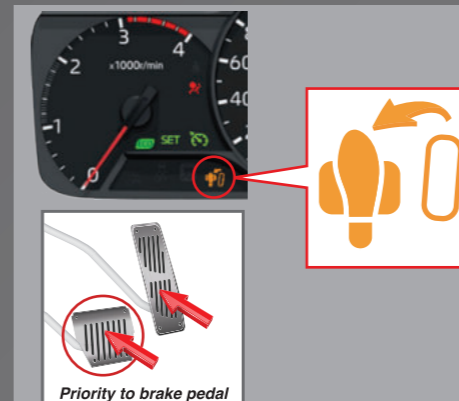
▲ ANTILOCK BRAKING SYSTEM (ABS)

An active safety feature designed to help driver retain steering control by preventing wheels from locking up during emergency braking



▲ ELECTRONIC BRAKEFORCE DISTRIBUTION (EBD)

Optimizes brake force depending on the load to ensure optimal braking system



▲ BRAKE OVERRIDE SYSTEM (BOS)

As a failsafe measure when acceleration and brake pedal are being pressed at the same time, priority will be given to braking



◀ THEFT MONITORING & SOS CALL

Monitor against break-in scenarios for your vehicle with 24-hour call center support and provide highly accurate location information that improves asset visibility

Note : Measurement various from body

SMART

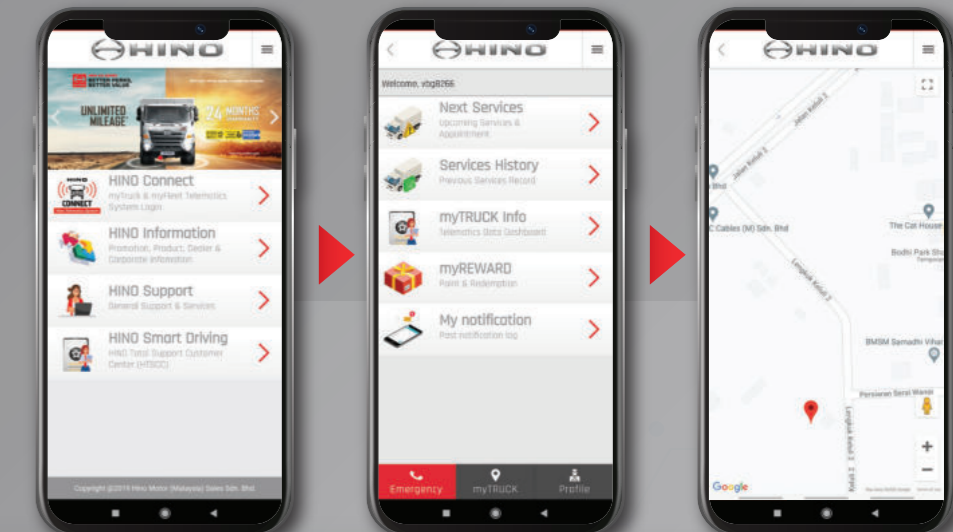


Security & data tracking system that provides:

- Fuel consumption data
- Fuel economy guide
- GPS for tracking/tracing vehicle location
- Driving Behaviour

▲ HINO CONNECT SYSTEM

Supports logistics operation in improving operational efficiency in terms of increase of profit, improve safety and security, encourage good driving behaviour, reduce unplanned downtime, and monitor truck maintenance by understanding the key elements of vehicle



▲ myHINO MOBILE APP

A specialized mobile application designed to link with HINO CONNECT System that allows user to track and monitor their vehicle in operation at one's fingertips

Note : Some images may be used for illustration purposes only.